

RERA REG. NO. RC/REP/HARERA/GGM/1030/762/2026/02 | DATED: 02.01.2026  
RERA REG. NO. RC/REP/HARERA/GGM/991/723/2025/94 | DATED: 16.10.2025  
PROMOTER: M3M INDIA INFRASTRUCTURES PRIVATE LIMITED  
WWW.HARYANARERA.GOV.IN

**M3M**  
Our Expertise. Your Joy.

**M3M**  
**FORESTIA**  
WEST

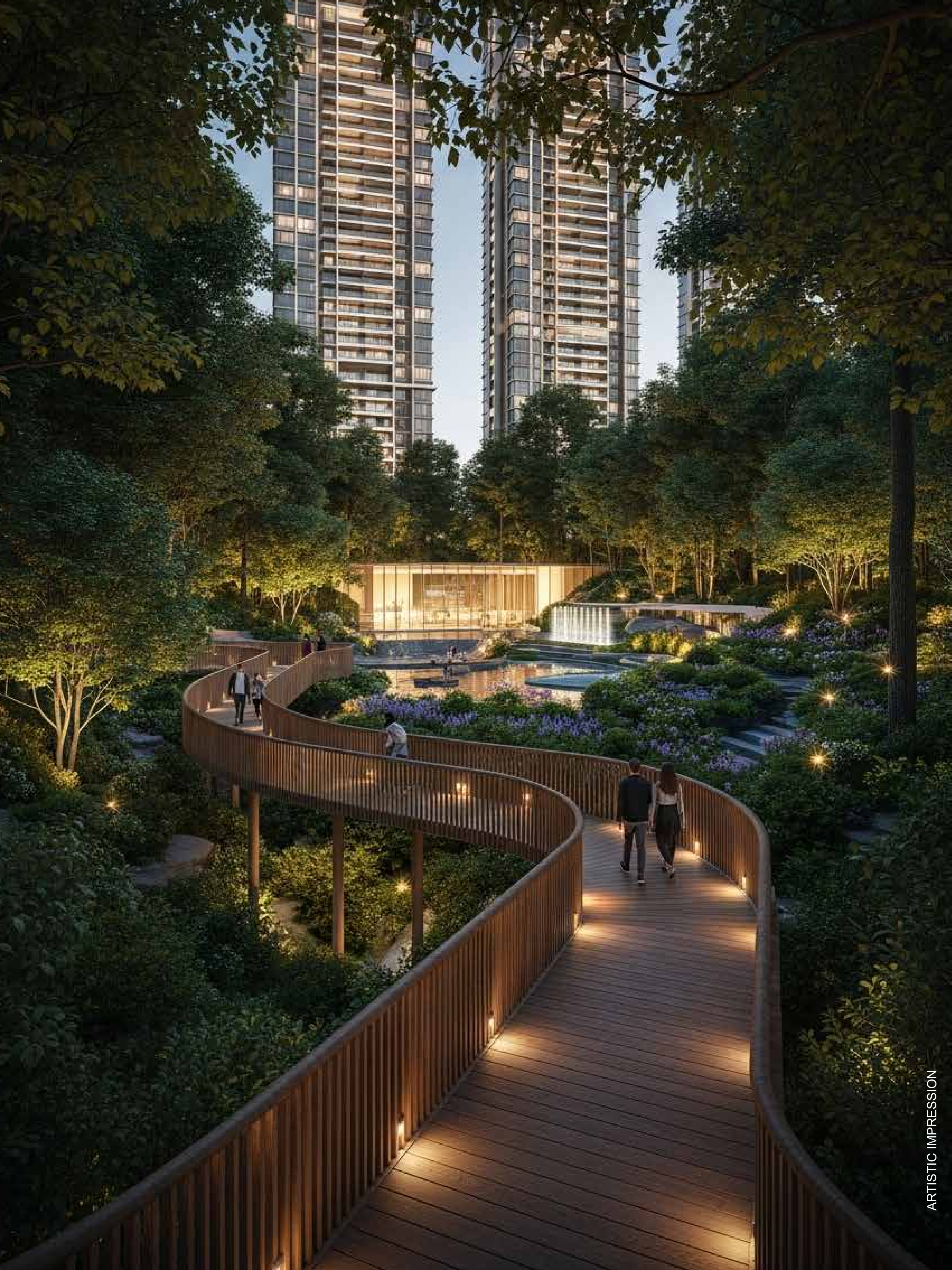


**GIC**  
— GURGAON —  
INTERNATIONAL CITY

# WELCOME TO A NEW ERA OF LUXURY

True luxury today is found in spaces that feel open, calm, and deeply connected to their surroundings. It is defined by balance, wellness, and the freedom to breathe easily — and live consciously.





ARTISTIC IMPRESSION

IT GOES BEYOND  
SURFACES &  
STRUCTURES. IT'S  
ABOUT QUALITY  
OF LIFE.

True luxury is no longer about what rises above the city skyline. It is about what grounds you in calm, comfort, and connection.

Presenting

**M3M**  
**FORESTIA**  
WEST

A LIFE  
CURATED BY NATURE

Thoughtfully envisioned forest-themed residences,  
crafted for those who seek harmony, calm, and  
conscious living.



HERE, EVERY  
BREATH FEELS PURE



ARTISTIC IMPRESSION

HERE, PEACE  
FINDS ITS COLORS



HERE, EVERY  
PATH IS DESIGNED  
FOR BALANCE



A LIFE BUILT WITHIN  
THE LARGEST  
INTEGRATED CITY  
OF GURGAON

---



Where living, working, innovation,  
and experiences coexist seamlessly.



# LIVE. WORK. INNOVATE EXPERIENCE.



## HABITATS

Homes shaped around calm, comfort, and natural surroundings, designed to restore balance every day.



## INNOVATION

A new-age ecosystem where future-ready businesses flourish, a global hub powered by innovation, sustainability, and intelligent planning.



## WORKSPACES

Thoughtfully planned work environments designed for modern enterprises — where productivity, flexibility, and well-being coexist.



## EXPERIENCES

A world-class retail and lifestyle destination designed for connection, leisure, and everyday experiences.



LIVE.

ARTISTIC IMPRESSION



WORK.

ARTISTIC IMPRESSION



PLAY.

ARTISTIC IMPRESSION

# AT THE CENTER OF LIFE AND GROWTH

Strategically located amid major expressways and growth corridors, reducing your travel time by 60% to the major hubs and business corridors.

## **KMP Expressway**

Connects To Haryana Industrial Hubs

## **NH8**

Direct Gurugram & Jaipur Access

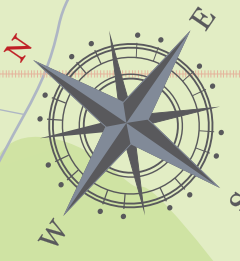
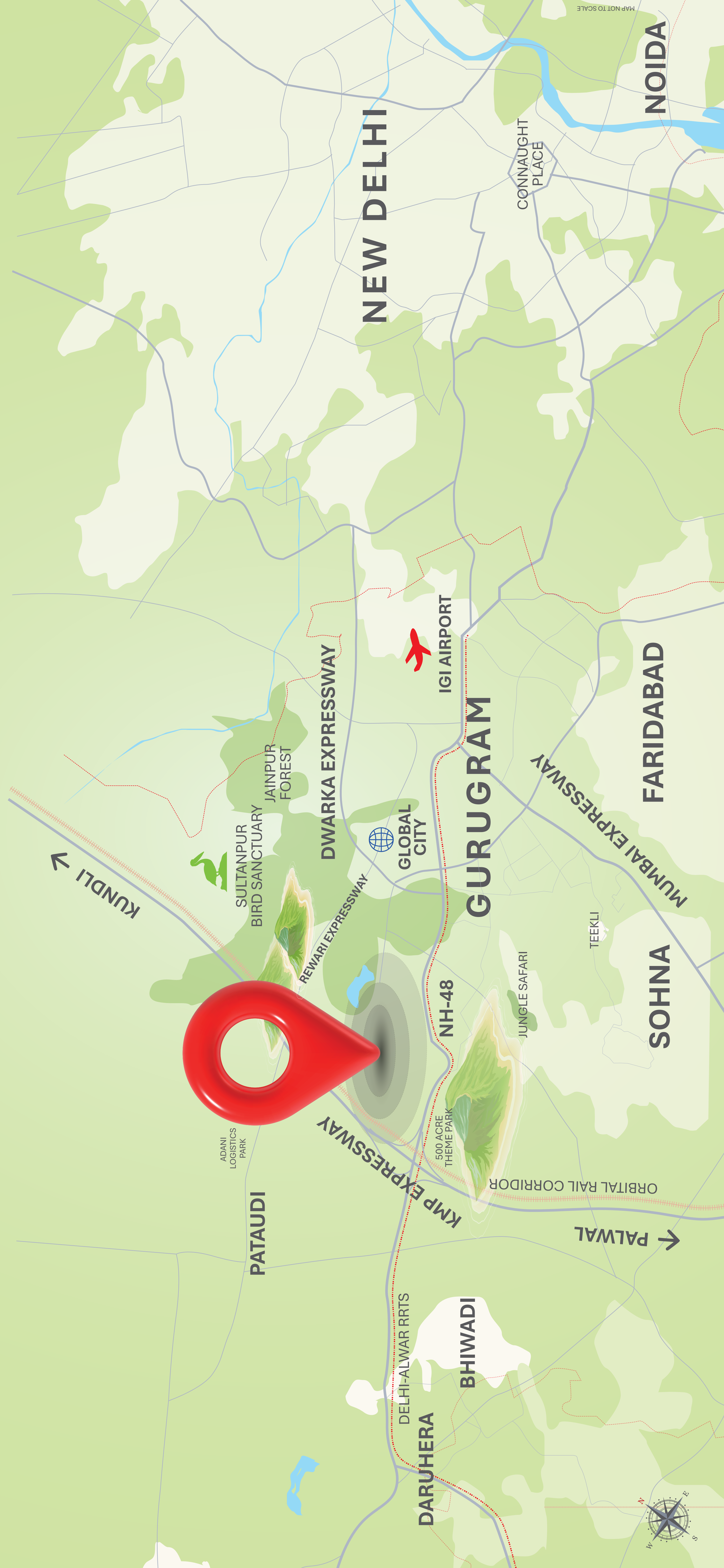
## **Delhi–Mumbai Expressway**

National Growth Corridor

## **Gurgaon – Rewari Expressway**

Seamless Connectivity to Delhi





NOIDA

NEW DELHI

FARIDABAD

SOHNA

GURUGRAM

IGI AIRPORT

GLOBAL CITY

DWARKA EXPRESSWAY

MUMBAI EXPRESSWAY

JAINPUR FOREST

SULTANPUR BIRD SANCTUARY

REWARI EXPRESSWAY

NH-48

JUNGLE SAFARI

TEEKLI

KUNDLI



ADANI LOGISTICS PARK

PATAUDI

KMP EXPRESSWAY

500 ACRE THEME PARK

ORBITAL RAIL CORRIDOR

PALWAL

DELHI-ALWAR RRTS

DARUHERA

BHIWADI

# SURROUNDED BY NATURE

Enveloped by Aravalli greens, natural lakes, forest reserves, and bird sanctuaries, M3M Forestia West enjoys the rare luxury of balance.



# THE LIFE AT M3M FORESTIA WEST



ARTISTIC IMPRESSION

A journey where architecture,  
landscape, and lifestyle flow as one.





ARTISTIC IMPRESSION

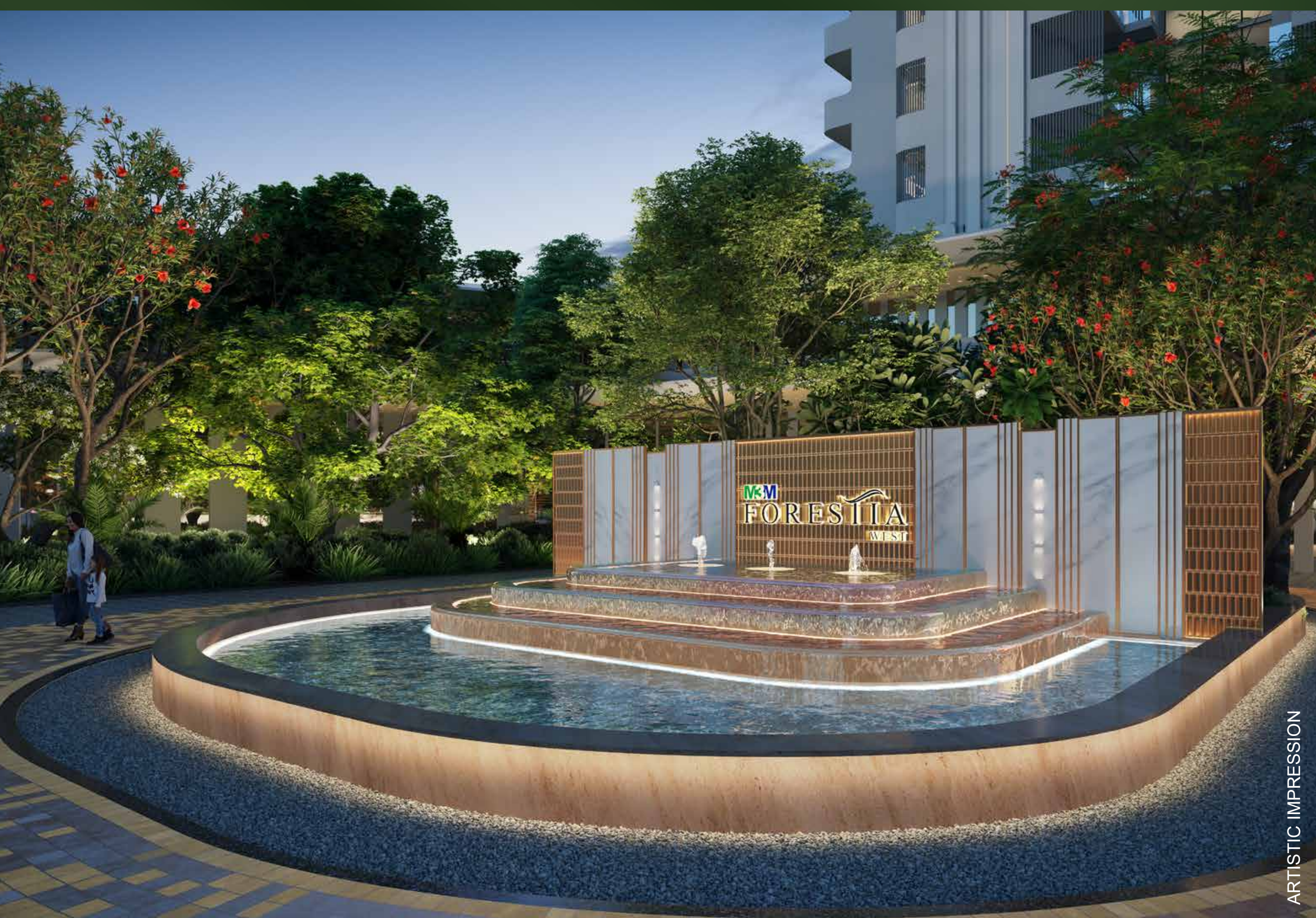
## AN ADDRESS THAT BREATHES WITH NATURE

M3M Forestia West offers thoughtfully designed homes, where space, light, and nature come together to create everyday calm.

- 3 BHK Forest-Themed Residences
- Expansive Decks Overlooking Lush Greens
- Efficiently Designed Residences



# A GRAND ARRIVAL ROOTED IN NATURE



ARTISTIC IMPRESSION

From a 60-metre-wide approach to nature-adorned entrances, your first experience sets the tone for a life lived beautifully.

# HOMES THAT OPEN TO NATURE



- Efficiently Designed Spaces
- Spaces that Bring Calm & Composure
- Expansive Decks with Beautiful Green Views



LIVE  
THE  
EXTRAVAGANT  
CLUB  
LIFESTYLE

INTRODUCING

CLUB EDEN

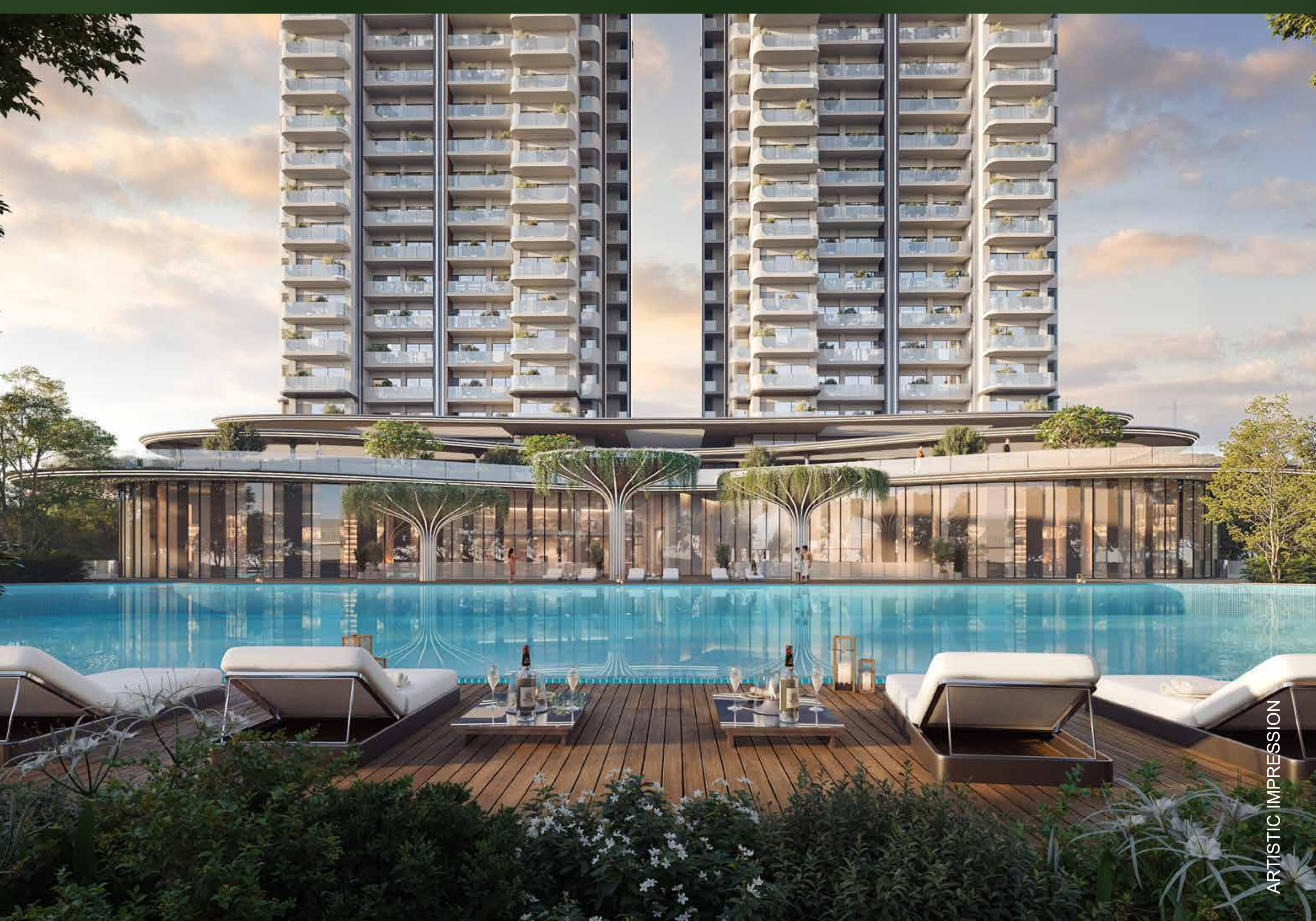


# ARRIVE IN STYLE AT THE EDEN CLUB





# A SANCTUARY OF LUXURY WITHIN THE GREENS



ARTISTIC IMPRESSION

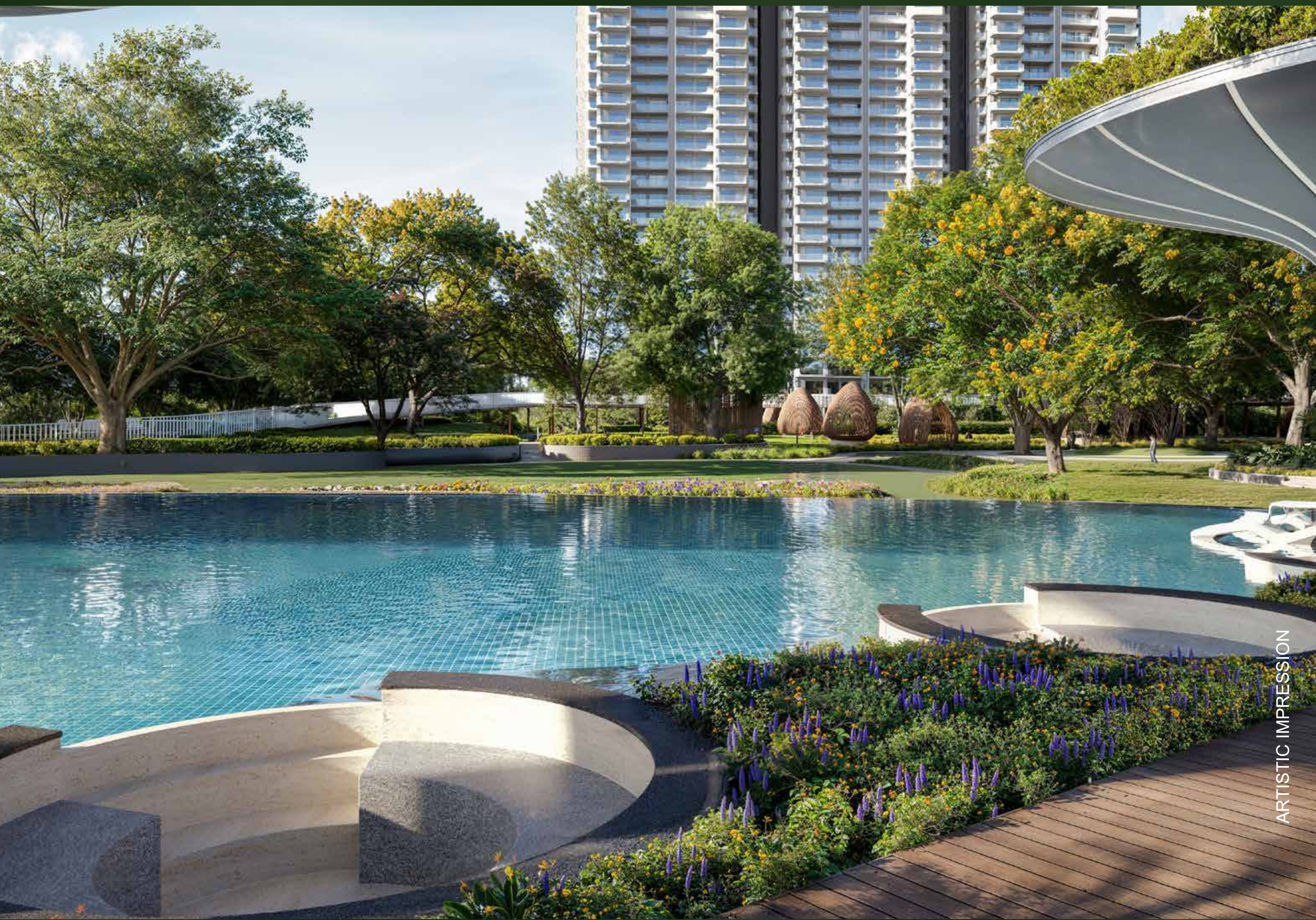
Contemporary in design and rich in experiences, the club brings together wellness, leisure, and celebration where every day feels refreshed.



# INDULGENCE, SET WITHIN NATURE



ARTISTIC IMPRESSION



ARTISTIC IMPRESSION

Indoor  
Pool

Outdoor  
Pool

Heated  
Pool

Plunge  
Pool

Lap  
Pool

Vitality  
Pool



HERE EVERYDAY  
FEELS NEW &  
EVERY EXPERIENCE  
REJUVENATING.



ARTISTIC IMPRESSION



ARTISTIC IMPRESSION



ARTISTIC IMPRESSION

- Café
- Jacuzzi
- Spa & Sauna
- Gym & Yoga



ARTISTIC IMPRESSION

# CHOICES FOR ANYONE & EVERYONE

## SPORTS

- Sports Lounge
- Basketball Court
- Squash Court
- Tennis Court
- Cricket Net
- Badminton Court

## ENTERTAINMENT

- Karaoke Lounge
- Virtual Gaming Zone
- Indoor Golf
- Bowling Alley
- Art Studio
- Music Room
- Cigar Lounge
- Multi-cuisine Restaurant
- Mini Golf

## REJUVENATE

- Butterfly Valley
- Rain Garden
- Viewing Decks
- Barbeque Area
- Amphitheatre
- Gazebo

## FITNESS & WELLNESS

- Rock Climbing Wall
- Boxing Studio
- Pilates Studio
- Meditation Room
- Yoga Zone
- Halotherapy Room
- Ayurvedic Treatment Room
- Hammam Suite
- Mud & Clay Therapy Area

## BUSINESS

- Conference Rooms
- Business Lounge
- Co-working Spaces
- VC Room





TRUE ESSENCE OF  
M3M FORESTIA WEST  
LIES IN ITS CENTRAL  
LANDSCAPE



ARTISTIC IMPRESSION

At the heart of M3M Forestia West lies a vast, immersive landscape of flowing water, shaded cabanas, skywalks, and curated sit-outs that invite pause, play, and presence.

# THE CENTRAL GROVE HEART OF GIC



# NATURE'S DEN AT CENTRAL GROVE

SPACES THAT INVITE YOU TO PAUSE

Sit-outs, shaded cabanas, gentle walkways, water-lined hangouts and thoughtfully placed spaces all designed to slow you down and let calm take over.



# WHISPERING FALLS AT CENTRAL GROVE

WHERE NATURE INVITES YOU TO STAY



Graceful water cascades flow through lush green settings, complemented by generous sit-out spaces designed for relaxed gatherings and effortless social living.





# SKYWALK AT CENTRAL GROVE



ARTISTIC IMPRESSION

## A PATH THAT LEADS TO PEACE

A thoughtfully designed skywalk spans the landscape, offering uninterrupted connections and panoramic views that elevate every walk into an experience.



# WHERE NATURE PAINTS A NEW STORY EVERY SEASON



ARTISTIC IMPRESSION

From native trees and flowering species to birds and butterflies, M3M Forestia West celebrates biodiversity creating a living ecosystem that evolves with time.

# 180+ BIRDS ACROSS SEASONS

## THE BIODIVERSITY AT GIC

SUMMER



Desert Teak

Cassia Fistula



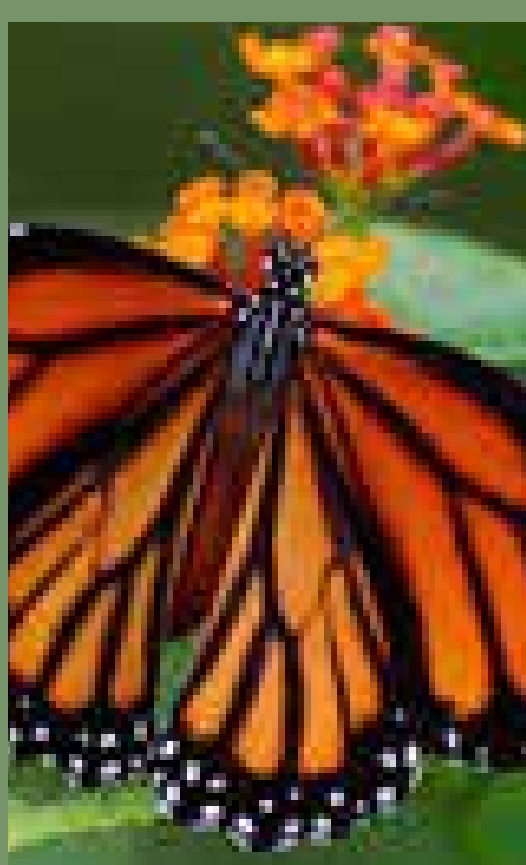
Ficus Religiosa

Indian Paradise Flycatcher



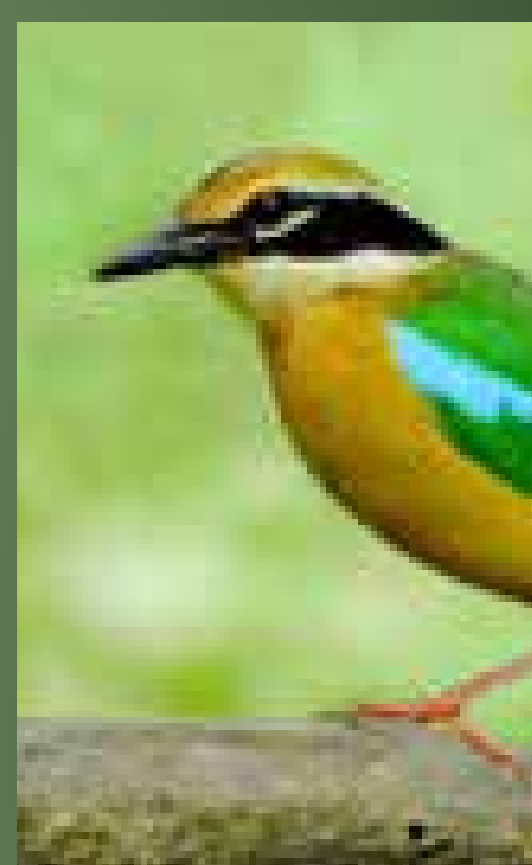
Butea Monosperma

Striped Tiger



Black Francolin

Indian Pitta



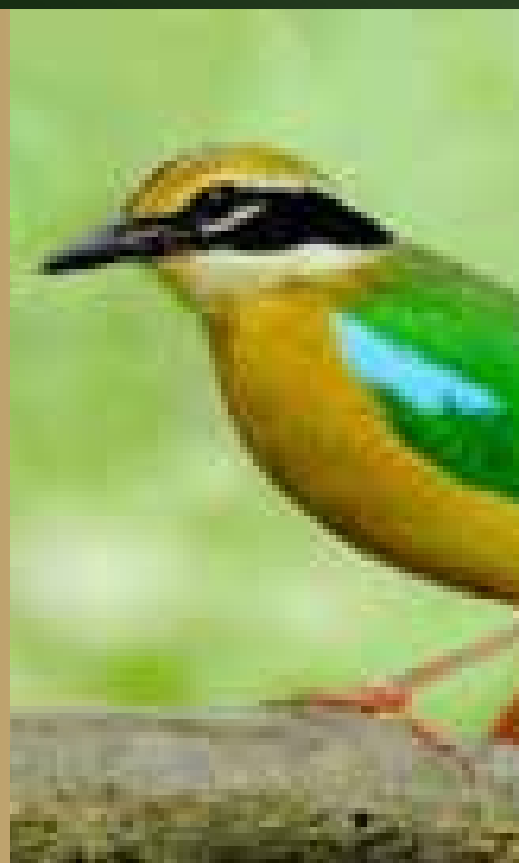
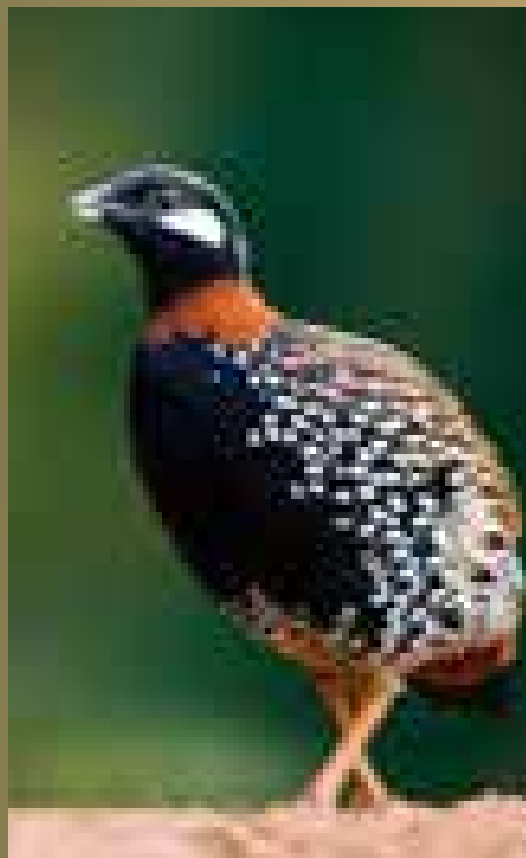
WINTER

SPRING



Indian Robin

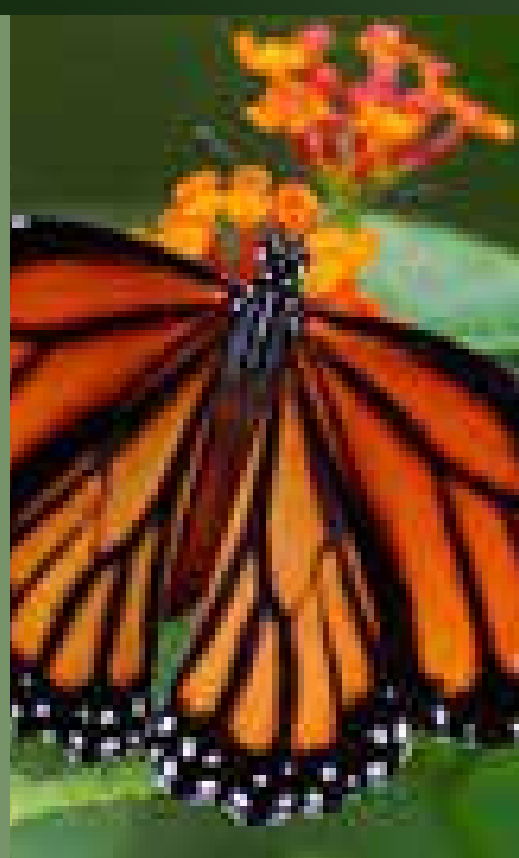
Black Francolin



Indian Pitta

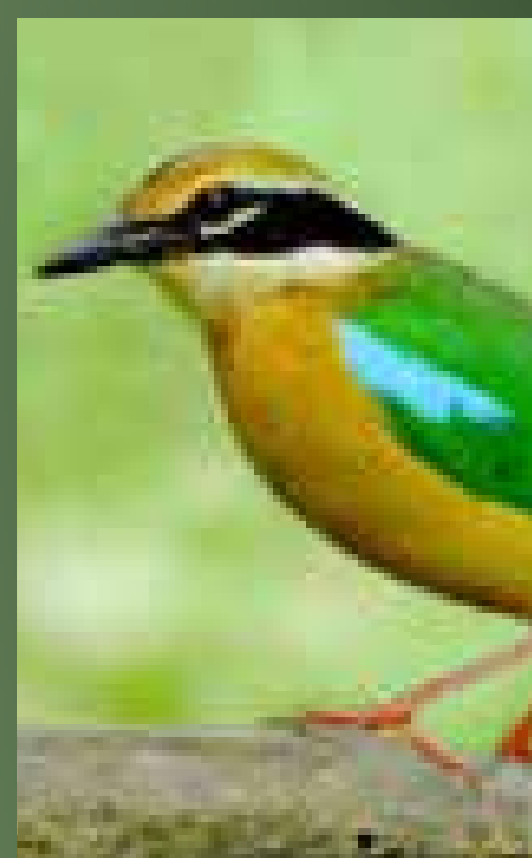
ARTISTIC IMPRESSION

Ziziphus Mauritiana



Striped Tiger

Indian Pitta



AUTUMN

# 200+ SPECIES OF TREES THAT ENHANCE THE QUALITY OF LIFE

Bamboo Grove



Bombax Ceiba



Nelumbo Nucifera



Depth & Texture



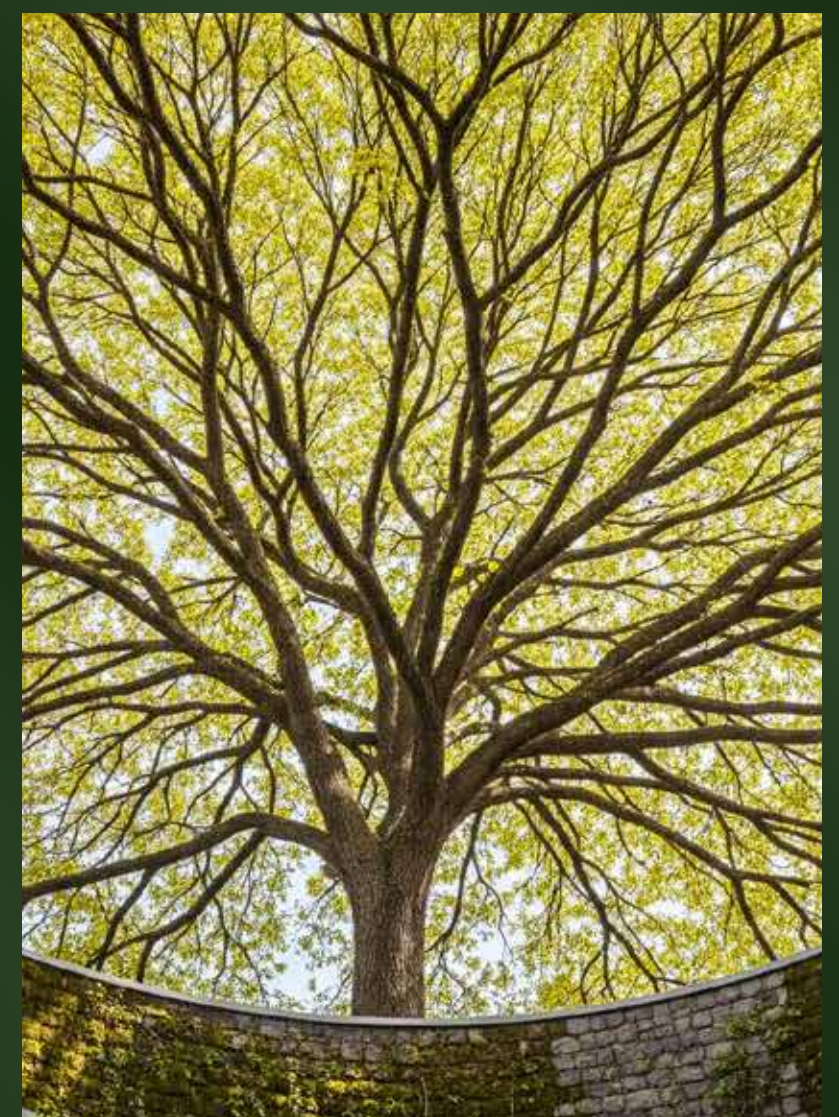
Seasonal Rhythms



Cassia Fistula



Harmonious Spaces



Duranta erecta



Water Edge Plants

Sky Canopy

A LIFE PAINTED IN  
UPLIFTING BLUES AND  
CALMING GREENS





# HERE SPACES ARE BUILT TO NURTURE WELL-BEING



ARTISTIC IMPRESSION

From tranquil water features and reflexology gardens to jogging trails, sports courts, forest walks, and wellness spaces every corner is designed to nurture physical, mental, and social well-being.

# RELAX & REJUVENATE

Water Feature

Seating Pods



ARTISTIC IMPRESSION



ARTISTIC IMPRESSION



ARTISTIC IMPRESSION



ARTISTIC IMPRESSION



ARTISTIC IMPRESSION

- Water Splash Plaza
- Strolling Garden
- Reflexology Garden

STROLL AMIDST  
THE GREENS :  
FOREST TRAILS



# CURATED FOR BALANCE AND FITNESS



Jogging Track

Skate Park

Cycling Track

Sports Courts

Climbing Wall

Outdoor Gym





THOUGHTFULLY  
DESIGNED JOGGING  
& CYCLING TRACK  
FOR ACTIVE,  
HEALTHY LIVING





PLAYFUL MOMENTS,  
SET BEAUTIFULLY IN  
THE GREENS.



ARTISTIC IMPRESSION



# CURATED FOR CONNECTIONS



ARTISTIC IMPRESSION



ARTISTIC IMPRESSION



ARTISTIC IMPRESSION



STOCK IMAGE



ARTISTIC IMPRESSION

Hammock Garden

Lantern Garden

Amphitheatre

Eco Pond

Forest Garden

Forest Trail

# GREEN WALKWAYS, LUSH LANDSCAPES, WATER BODIES AND YOU.

Every element here is designed to awaken the senses from shaded walkways and flowing streams to open greens that breathe with life.



ARTISTIC IMPRESSION



# CURATED TO TAKE YOU CLOSE TO NATURE

Garden Plaza

Organic Farm

Bonfire



ARTISTIC IMPRESSION



ARTISTIC IMPRESSION



ARTISTIC IMPRESSION



ARTISTIC IMPRESSION



ARTISTIC IMPRESSION



ARTISTIC IMPRESSION

Pet Park

Water Cascades

Reflexology Garden





# EXPERIENCE A DIFFERENT RHYTHM OF LIVING

A Life Curated to make you feel, hear, see and  
experience a different dimension of the world.



ARTISTIC IMPRESSION



**M3M INDIA INFRASTRUCTURES PRIVATE LIMITED**  
CIN: U4540OHR2014PTCO54057

#### Registered Office Address

41<sup>st</sup> Floor, Tower-1,  
**‘M3M International Financial Center’**,  
Sector-66, Gurugram-122101, Haryana

#### Sales Gallery


**‘M3M Gallery 77’**, Sector - 77,  
Gurugram - 122004, Haryana

#### CRM Lounge

10<sup>th</sup> Floor, **‘M3M Urbana Business Park’**, Tower A,  
Sector - 67, Golf Course Road (Extn.), Gurugram - 122101,  
Haryana

#### Project Site

**‘M3M Forestia at  
Gurgaon International City’**,  
Sector-M-9, M-10 & M-11, Gurugram, Haryana

 +91 97110 05826

 1800 123 3333 | 80689 70077

 feedback@M3MIndia.com

 www.M3MIndia.com

DISCLAIMER: The contents, information, images, visuals or sketches, computer generated images including landscaping on the advertisement are merely representative images or artistic renderings for general informational purposes only, unless specifically claimed to be actual photograph. The materials, designs, square footages, fixtures and amenities depicted by artist's or computer rendering are only for illustration and not necessarily be part of the offer. 'M3M Forestia West I' is a distinct component of the Industrial Plotted Colony and not an Affordable Group Housing Project under the Affordable Housing Policy, 2013, is being developed by M/s M3M India Infrastructure Private Limited ("Promoter") as an integral part/constituent/block of the larger project namely Gurgaon International City, and is being developed as Phase 10A & 10 B on land admeasuring 2.92433939 Hectares (7.2262 Acres) as part of the land earmarked as AGH-1 Pocket-A (16.47378 Acres) out of the total licenced area admeasuring 56.57252 Hectares (139.79375 Acres) situated in the revenue estate village of Bas Haria & Jund Sarai Abad., Sector-M9, M10 & M11, Manesar, Gurugram, Haryana ("Project"). The Project is governed by Enterprises Promotion Policy-2015 (EPP-15), wherein Clause 1.6(iii) entitles the Promoter/Licensee, having paid the applicable licence fee and being liable to pay EDC and IDC, to sell units otherwise than at the pre-determined rates prescribed under EPP-15. Therefore, prices and terms of the sale of the units in the Project shall be governed by the Agreement for Sale and applicable laws. The Project is duly registered with Haryana Real Estate Regulatory Authority vide Regn. No. RC/REP/HARERA/GGM/1030/762/2026/O2 dated 02.01.2026. All details of the said registered project are available on www.haryanarera.gov.in and may be verified before by the viewer/recipients at their own independent discretion. Nothing contained herein shall constitute legal offer and does not form part of any legally binding agreement and/or any commitment of any nature. Recipients/viewers are advised to exercise their independent discretion in relying on the information shown/provided and shall verify all details regard area, amenities, terms of services, payment terms, scheme, calculation terms, offers and payment and other relevant terms independently with the sales team of the Promoter Company and take appropriate advice prior to concluding any decision for buying any Unit(s) in the Project and shall confirm the same with the office of the Promoter Company. \*Taxes and statutory charges are extra as per applicable norms. The use of word 'M3M' shall in no manner be construed or interpreted as M3M India Pvt. Ltd. being the Promoter and / or Developer of the Project. Dispute with regard to the interpretation of information or arising from use or reliance of this website will be subject to the exclusive jurisdiction of District Courts at Gurugram, Haryana and Hon'ble High Court of Punjab and Haryana High Court, Chandigarh India. All disputes shall be governed by prevailing laws in India.